



GAT MONTHLY MEMBERSHIP PROGRESS REPORT

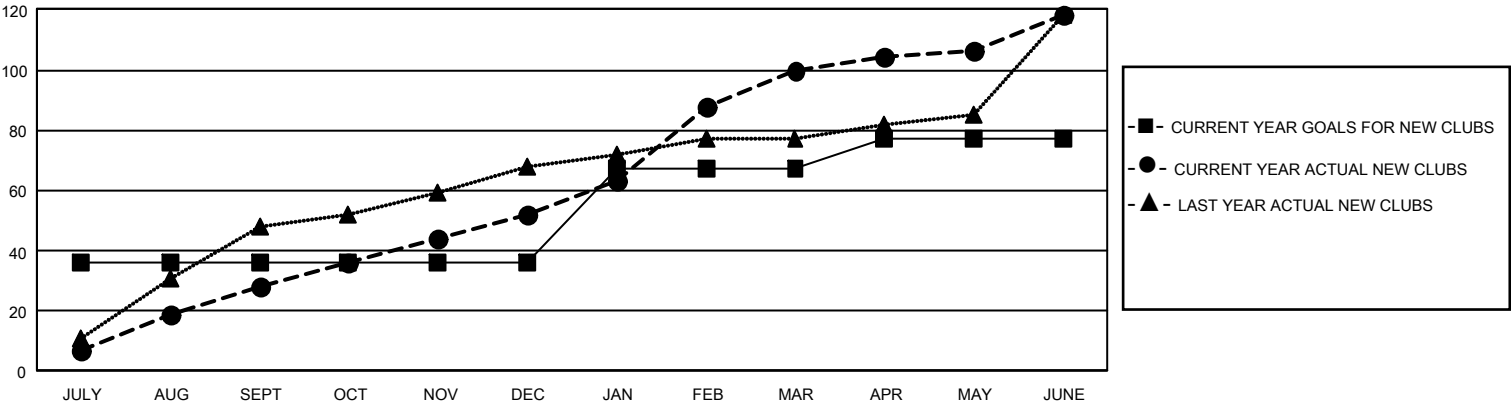
Results as of: 6/30/2025

GMT Constitutional Area 6 - I, Group D

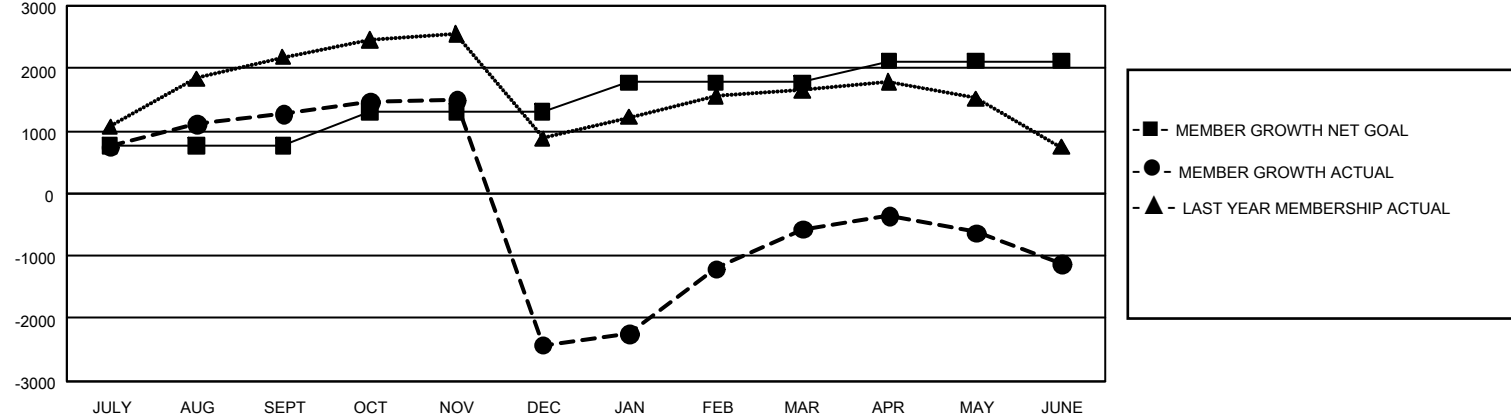
REPORT DOES NOT INCLUDE CLUBS IN UNDISTRICTED AREAS.

Clubs				Members			
RESULTS FOR 2024-2025				RESULTS FOR 2024-2025			
QUARTER	NEW CLUB GOAL	NEW CLUBS	DROPPED CLUBS	QUARTER	MEMBER GROWTH NET GOAL	MEMBER GROWTH ACTUAL	DROPPED MEMBERS ACTUAL (including transfers)
JULY/AUG/SEPT	108	28	17	JULY/AUG/SEPT	765	2,078	620
OCT/NOV/DEC	0	24	110	OCT/NOV/DEC	545	1,511	5,089
JAN/FEB/MAR	93	48	18	JAN/FEB/MAR	465	3,140	736
APR/MAY/JUNE	30	18	29	APR/MAY/JUNE	340	5,607	4,895

GOALS AND ACTUAL NEW CLUBS CUMULATIVE



GOALS AND ACTUAL MEMBERS CUMULATIVE



DROPPED CLUBS: 174		732 CLUBS OF 1,189 ADDED 1 OR MORE NEW MEMBERS	<u>GENDER DISTRIBUTION</u>	
<u>DROPPED MEMBERS</u>  DECEASED 134 CLUB CANCELLED 3,948 OTHER 7,237 <hr/> TOTAL 11,319			MALE	28,436 (74.74%)
			FEMALE	9,598 (25.23%)
			NON BINARY	0 (0.00%)
			PREFER NOT TO ANSWER	13 (0.03%)
		<a href="#">CLICK HERE FOR CUMULATIVE MEMBERSHIP DATA</a>	TOTAL FAMILY UNIT MEMBERS	12,207
			FAMILY MEMBERS PAYING HALF DUES	7,200